

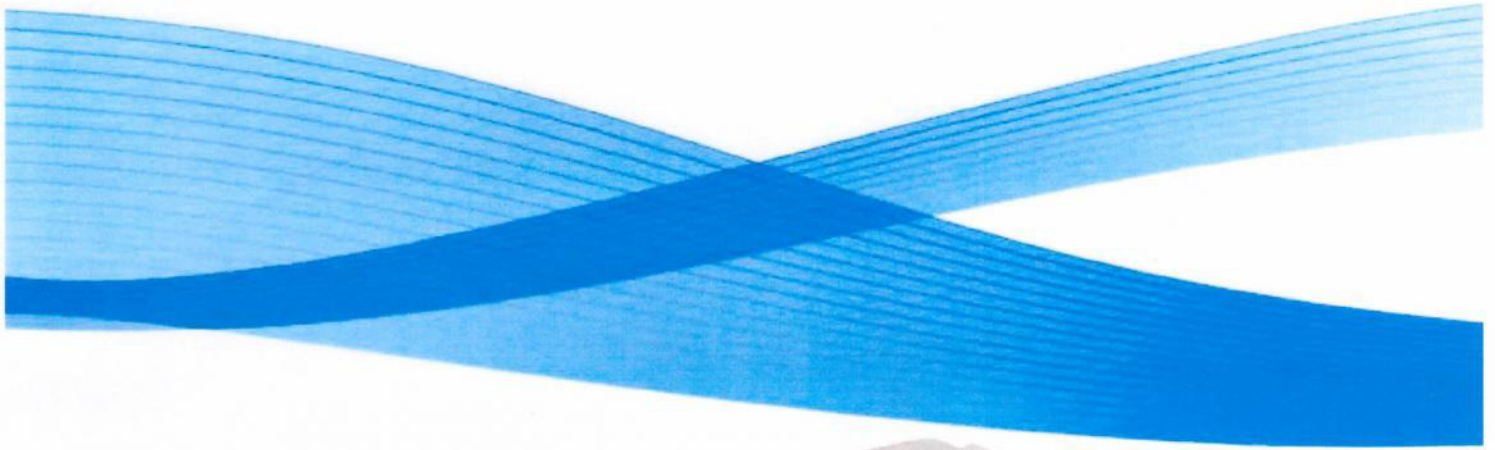
DocuCentre-IV
5070
4070

FUJI XEROX 

DocuCentre-IV 5070 / 4070

Digital Black and White Multifunction Device

Productivity, flexibility and simplicity



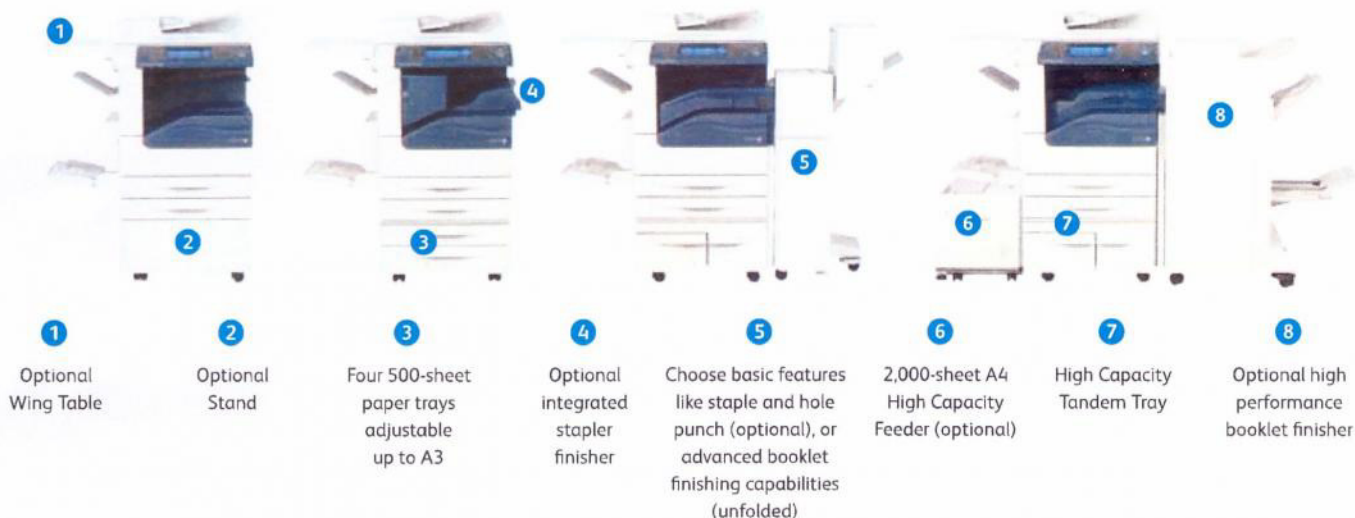
Simplicity in design

Fast copying and printing and advanced scanning and faxing. The modular and easy-to-manage DocuCentre-IV 5070 / 4070 multifunction devices are packed with high-end features to deliver a level of productivity above and beyond your typical office MFD.

With fast deployment and easy support, your device is ready to deliver the performance you need, when you need it. Helpful tools make it easy to maintain complete control — allowing you to keep costs to a minimum.

Features at a glance

- Print and copy speeds of up to 45 / 55 ppm to keep up with even the busiest environments
- Improve the way you work with full colour scanning
- Fax solutions available, including Walk-up, Internet Fax and IP Faxing
- Innovative 9-inch, colour user interface



Security at every level

Secure Print helps prevent unauthorised viewers from seeing documents by holding jobs in the print queue until the user is authenticated.

Image Overwrite security feature clears or “overwrites” all trace of any document image data remaining on the hard drive after a print, copy, scan or fax job (when enabled).

Hard disk encryption helps ensure that unauthorised users can't access stored documents.

IPv6 support includes full enablement of the new IPSec standard.

An internal firewall provides an additional measure of security, providing IP filtering, domain filtering and port blocking.

Network authentication restricts access to scan, email and network fax features by validating user names and passwords before use. Audit Log capabilities let you know who sent what, when.



- 1
USB memory slot (optional)
- 2
Menu button
- 3
9" colour user interface
- 4
Authentication button
- 5
Status display LEDs
- 6
Power-saving button
- 7
Main power LED

Dramatically increase your workflow efficiency. Cutting-edge scanning functionality opens the door to better ways of getting work done. Scan to Email quickly distributes documents to multiple email addresses. Store files on the device, or in a personal directory. You can also scan documents to network folders, FTP sites and fax servers right from the device.

Easy archiving, organising and searching. With scan to searchable PDF*, you can create a fully text-searchable file and integrate it into your workflow process in one easy step.



*Optional Searchable PDF Kit is required

Significantly smaller scan files. The latest scan-export compression technologies reduce traffic on the network and accelerate document delivery.

The speed you need. With ultra-fast copying and printing — choose from 45 ppm up to 55 ppm — there's more than enough speed to meet the needs of any busy department or workgroup.

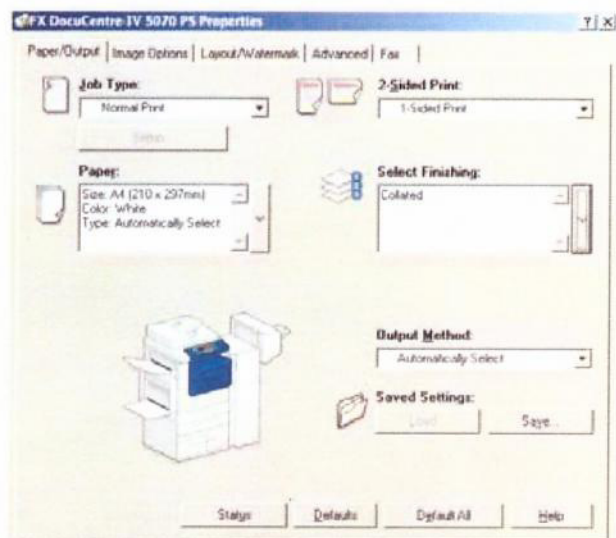
Multitasking mastery. Scan a job while another job prints. Send a fax while making copies. The powerful 1.2 GHz Freescale processor concurrently processes all jobs received, and performs multiple tasks simultaneously.

Walk-up simplicity. Print from and scan to any USB memory device for faster document delivery when you're not at your computer.

9-inch, colour touch screen interface. Provides the comfortable look and feel Fuji Xerox is known for and features bright, intuitive icons and easy access to all major functions directly from the home screen.

Advanced copy and print features. Plenty of support for specialised print applications, such as Annotation, Bates Stamping, ID Card Copy and tab print capability.

WHQL certified PCL and PostScript print drivers* provide a consistent, easy-to-use interface for end-users that can greatly simplify your printing operations.



*WHQL certified drivers will be available from the end of August 2011.

Extensive fax capabilities. Network server fax enablement, Internet fax enablement (to avoid long distance charges), walk-up fax with LAN fax and IP faxing. With fax forward to email feature, incoming faxes can be automatically routed to any valid email address, device folder or network folder to save paper and speed retrieval.

Specifications of DocuCentre-IV 5070 / 4070 Series

Copy Function

	DocuCentre-IV 5070	DocuCentre-IV 4070
Type	Console type	
Memory	1.5 GB	
HDD	80 GB (Usable space: 40 GB)	
Scanning Resolution	600 x 600 dpi	
Printing Resolution	600 x 600 dpi	
Warm-up Time	30 sec or less (at room temperature 20 degrees C) 10 seconds or less (After exiting low power mode (at 20 C room temperature))	
Original Paper Size	Max: 297 x 432 mm (A3, 11 x 17") for both sheet original and book original	
Output Paper Size	Max: A3, 11 x 17" (For Bypass Tray, Max: A3, 11 x 17") Min: A5 (For Bypass Tray, Min: Postcard (100 x 148 mm), Envelope (235.0 x 120.5 mm))	
Output Paper Weight ¹	Tray 1: 60 to 105 gsm, Tray 2 to 4: 60 to 216 gsm, Bypass Tray/HCF: 60 to 216 gsm	
First Copy Output Time	BW: 3.1sec (A4 LEF)	
Continuous Copy Speed	55 ppm	45 ppm
Paper Tray Capacity	Standard: 1,095 sheets: 500 sheets x Tray 1 + 500 sheets (Tray 2) + 95 sheets (Bypass Tray) Optional: Two Tray Model: 2,095 sheets (500 sheets x 2 Tray + 500 sheets x 2 Tray + Bypass 95 sheets) Tandem Tray Model: 3,095 sheets (500 sheets x 2 Tray + 870 sheets x 1 Tray + 1,130 sheets x 1 Tray + Bypass 95 sheets) High Capacity Feeder (HCF): 2,000 sheets Maximum: 5,095 sheets: (Tandem Tray Model + HCF) 500 sheets x 2 Tray + Tandem Tray 2,000 sheets (870 + 1,130 sheets) + HCF 2,000 sheets + Bypass 95 sheets	
Output Tray Capacity	500 sheets	
Power Supply	AC 220 - 240 V, 8 A, 50/60 Hz	
Power Consumption	Maximum: 2.4 kW or less Sleep mode: 2.2 W or less Standby Mode: 140 W or less	
Dimensions	W 640 x D 693 x H 1,116 mm (With Duplex Automatic Document Feeder)	
Machine Weight	From 73 kg (Main body + Duplex Automatic Document Feeder)	

¹ Performance may vary for heavyweight, coated and special stocks.

Print Function

Type	Built-in type
Print Resolution	1,200 x 1,200 dpi, 600 x 600 dpi
PDL	Standard: PCL6, PCL5, ESC/P(K), TIFF, HPGL/HPGL2, KS, KSSM, KSS895, XPS, PDF, DocuWorks, Optional: Adobe® PostScript® 3™
Operating System	Standard: Microsoft® Windows® 2000, Microsoft® Windows® XP, Microsoft® Windows Server® 2003, Microsoft® Windows® XP Professional x64, Microsoft® Windows Server® 2003 x64, Microsoft® Windows Vista®, Microsoft® Windows Vista® x64, Microsoft® Windows Server® 2008, Microsoft® Windows Server® 2008 x64, Microsoft® Windows® 7, Microsoft® Windows® 7 x64, Microsoft® Windows Server® 2008 R2, Mac OS® X 10.5/10.6 Adobe® PostScript® 3™ Optional: Microsoft® Windows® 2000, Microsoft® Windows® XP, Microsoft® Windows Server® 2003, Microsoft® Windows® XP Professional x64, Microsoft® Windows Server® 2003 x64, Microsoft® Windows Vista®, Microsoft® Windows Vista® x64, Microsoft® Windows Server® 2008, Microsoft® Windows Server® 2008 x64, Microsoft® Windows® 7, Microsoft® Windows® 7 x64, Microsoft® Windows Server® 2008 R2, Mac OS® 9.2.2, Mac OS® X 10.3.9 - 10.6.11 (except 10.4.7), Mac OS® X 10.5/10.6
Connectivity	Standard: Ethernet 100BASE-TX/10BASE-T, USB2.0, Bidirectional Parallel IEEE1284-B) Optional: 1000BASE-T

Scan Function (Optional)

Type	Colour Scanner
Scanning Speed	BW: 70 ipm, Colour: 70 ipm
Scanning Resolution	600 x 600 dpi, 400 x 400 dpi, 300 x 300 dpi, 200 x 200 dpi
Connectivity	Standard: Ethernet 100BASE-TX/10BASE-T Optional: Ethernet 1000BASE-T
Scan Destinations	Scan to Folder, Scan to PC/Server (using FTP/SMB protocol), Scan to Email and Scan to USB

Fax Function (Optional)

Send Document Size	Max: A3, 11 x 17", Long documents (Max: 600 mm)
Transmission Time	Less than 3 seconds
Transmission Mode	ITU-T G3
No. of Fax Lines	PBX, PSTN, Maximum 3 ports G3:3 port

Duplex Automatic Document Feeder

Capacity	110 sheets
Original Paper Size	Max: A3, 11 x 17", Min: A5
Output Paper Weight	38 - 128 gsm (Duplex: 50 - 128 gsm)
Feeding Speed (A4 LEF)	55 ppm 46 ppm

Descriptions in this manual, product specifications and appearances are subject to change without prior notice due to machine models. Please note that the product colour appears differently from the actual colour as a result of properties of paper or printing ink. Windows and Windows XP are registered trademarks of Microsoft Corporation. NetWare is a registered trademark of Novell, Inc. in the United States, Canada, Mexico, Brazil and other. Other trademarks of Apple Computer, Inc., PostScript is a registered trademark of Adobe Systems Incorporated in each country. HPGL is a registered trademark of Hewlett-Packard Company. Other company names or product names are registered trademarks or trademarks of their respective companies.

Support for the standard configuration of installed machines is supported for up to 7 years from the date of the end of machine production.

For more information or detailed product specifications, call or visit us at

Fuji Xerox Australia 101 Waterloo Road,
Macquarie Park NSW 2113

Tel. (02) 9856 5000 Fax. (02) 9856 5003

13 14 12

<http://www.fujixerox.com.au>

Finisher-A1 (Optional)²

Paper Size / Paper Weight	Output Tray: A3, 11 x 17", Min: Postcards (100 x 148 mm), 60 - 216 gsm
Stacker Capacity	Output Tray: 500 sheets (A4) (Without Staples) A4: 500 Sheets, B4: 250 Sheets, A3 or larger: 200 Sheets, Mixed Size Stacking: 250 Sheets, [With Staples] 30 Sets

Capacity	A4: 50 Sheets (Max 90 gsm), B4 or larger: 30 Sheets (Max 90 gsm)
Paper Size	Max: A3, 11 x 17", Min: B5 LEF
Position	Single (Front / Angled Staple)

² The optional Finisher-A1 cannot be installed on DocuCentre-IV 5070

Finisher-B1 (Optional)³

Paper Size / Paper Weight	Max: A3, 11 x 17", Min: B5, 55 - 216 gsm
Stacker Capacity	[Without Staple] A4: 2,000 Sheets, B4: 1,000 Sheets, Mixed Size Stacking: 300 Sheets, [With Staples] A4: 100 Sets or 1,000 Sheets, B4 or larger: 75 Sets or 750 Sheets, Booklet/Fold: 50 Sets or 600 Sheets, Fold: 500 Sheets

Capacity	50 Sheets (Max 90 gsm)
Paper Size	Max: A3, 11 x 17" Min: B5 LEF
Position	Single (Front / Angled, Back / Straight), Dual (Parallel)
Punch	
Paper Size	A3, 11 x 17", B4, A4, A4 LEF, Letter (8.5 x 11"), Letter (8.5 x 11") LEF, B5 LEF
Number of Holes	2 Holes or 4 Holes, or US2 or 3 Holes
Paper Weight	60 - 200 gsm
Booklet Finishing	
Capacity	Booklet: 15 sheets, Fold: 5 sheets
Paper Size	Max: A3, 11 x 17" Min: A4, Letter (8.5 x 11")
Paper Weight	Saddle-Stapling: 64 - 80 gsm, Half-Folding: 60 - 105 gsm
Dimensions / Weight	W 643x D 552 x H 942mm, 28 kg W 643 x D 597 x H 1,058mm, 37 kg (When the Booklet Maker Unit is attached)

³ The optional Finisher-B1 cannot be installed on ApeosPort-IV 5070

Booklet Finisher-C1 (Optional)

Paper Size / Paper Weight	Exit Tray: Max A3, 11 x 17", Min: B5, 60 to 216 gsm Finisher Tray: Max: A3, 11 x 17", Min: B5, 60 to 216 gsm Max: A3, 11 x 17", Min: B5, 60 to 105 gsm 500 Sheets (A4)
---------------------------	---

Stacker Capacity	Finisher Tray: [Without Staple] A4: 1,500 Sheets, B4 or larger: 1,500 Sheets, Mixed Size Stacking: 300 Sheets, [With Staple] A4: 200 Sets or 1,500 Sheets, B4 or larger: 100 Sets or 1,500 Sheets Booklet Tray: 20 Sets
------------------	--

Capacity	50 Sheets Max. 90 gsm
Paper Size	Max: A3, 11 x 17", Min: B5
Position	Single (Front / Back / Angled), Dual (Parallel)
Punch	
Paper Size	A3, 11 x 17", B4, A4, A4 LEF, Letter (8.5 x 11"), Letter (8.5 x 11") LEF, B5 LEF
Number of Holes	2 / 4 holes (Option US 2 / 3 holes)
Paper Weight	60 to 169 gsm
Booklet Finishing	
Capacity	Saddle-Stapling: 15 Sheets, Half-Folding 5 Sheets
Paper Size	Max: A3, 11 x 17", Min: A4, Letter (8.5 x 11")
Paper Weight	Saddle-Stapling: 64 - 90 gsm, Half-Folding: 64 - 105 gsm
Dimensions / Weight	W 876 x D 639 x H 1,058 mm, 90 kg

High Capacity Feeder (Optional)

Paper Size / Paper Weight	A4 LEF, 8.5 x 11" LEF, B5 LEF, 56-216 gsm
Paper Capacity	2,000 sheets (80 gsm)
Dimensions / Weight	W389 x D610 x H380 mm, 29 kg

Customer Expectation Document (CED)

For detailed product specifications, optimum performance parameters and service clearances refer to the Customer Expectation Document.



Reproduction Prohibitions Please note that reproduction of the following is prohibited by law: Domestic and overseas bank notes and coins, government-issued securities, national bonds and local bond certificates, unused postage stamps and post cards, centime stamps stipulated by law. The reproduction of works for copyright purposes (literary works, musical works, paintings, engravings, maps, cinematographic works, photographic series, etc.) is prohibited except when they are reproduced personally, at home or within limited range according to the above. This product is equipped with an anti-counterfeit feature. This feature is not intended to prevent illegal reproduction. Be extremely careful about the management of equipment used.

For Your Safe Use
Before using the product, read the Instruction Manual carefully for proper use.
Use the product with an appropriate adequate power source and voltage if applied. Be sure to establish a ground. In the case of a failure or short-circuit, an electric shock may result.